



ECONOMIC REVITALISATION

portfolio

\$4.98 million
allocated to 30 June 2013

The aim of this category is to remove earthquake related barriers to Canterbury having a vibrant and sustainable economy that provides ongoing employment. The Trustees are looking to focus on small to medium size businesses with less than 50 staff. The Trust will provide support through existing organisations, which support businesses.

2012/13 Grants

\$4.98 million to 30 June 2013

Purpose	Recipient	Amount	Contribution from specific donors
Towards the establishment of the Quake City exhibition at 99 Cashel Mall.	Canterbury Museum Trust Board	\$250,000	-
For activities that will bring people back to 9 local business districts across Canterbury.	Canterbury Business Recovery Trust	Up to \$140,000	-

2011/12 Grants

\$4.69 million (as at 30 June 2012)

\$120,000 to help ethnic businesses recover.

\$200,000 for temporary business accommodation in Rangiora and Kaiapoi.

\$1 million to the Westpac Business and Community Hub to house not-for-profit groups.

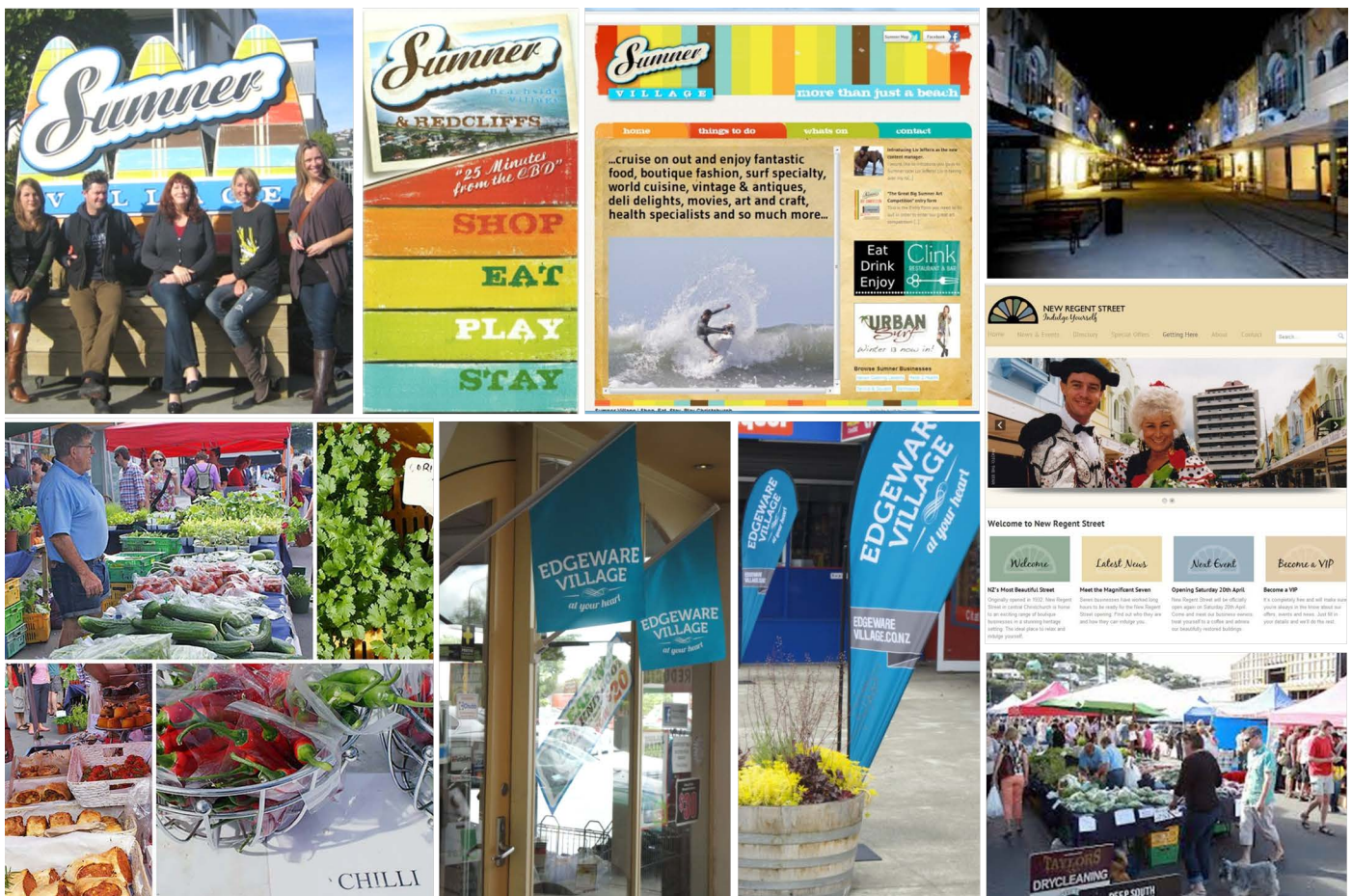
\$3,368,523 loan to create the temporary Re:START the Heart retail mall.

Revitalising nine local business precincts \$140,000

Encouraging shoppers back to their local, earthquake-affected business precincts was the purpose of these funds. Granted to the Canterbury Business Recovery Trust - which has since closed - in 2013 it benefitted Sumner, Edgware, Rangiora, Papanui, New Regent Street, Lyttelton, Kaiapoi, New Brighton and Oxford. Activities like community engagement, marketing and supporting community events, all helped to bring people back into these shopping areas.



Local business precincts



The Quake City exhibition \$250,000

The Appeal Trust contributed towards the \$1 million fit out costs of the exhibition, located at 99 Cashel Mall. An initiative of Canterbury Museum Trust Board, the exhibition provides people with another reason to visit the city centre, as well as helping people to remember the earthquakes and to better understand the city. It includes interactive exhibitions such as an active liquefaction volcano, a Lego display and a cycle-powered movie. Visitors can also be captivated by the stories and photographs of emergency service teams during the aftermath of the major earthquakes. And, iconic objects such as the Cathedral Spire are on display.

40,000
People have
attended the Quake
City exhibition
to date.

